



PNVD

Waterproof EN 100027 (when closed)

- > Natural Ventilation Damper
- > Supply/Extract
- > High Airflow

APPLICATION

The PNVD blade damper is designed for wall mounted applications. Allowing fresh air from outside to directly enter internal spaces through the building envelope.

Weathering performance in combination with 30z type external louvre and internal louvre grille: *Class A up to 2.5 m/s to EN13030.*

TECHNICAL SPECIFICATIONS

Free Area:	74%
Airflow:	805 l/s/m ² (@1Pa)
Air Leakage:	Qn50 = 0,79 m ³ /h*m (closed)
U Value:	0.98 W/m ² K

DESIGN

Construction:

Aluminium frame (Al Mg Si 0.5)
Blade: HD PVC

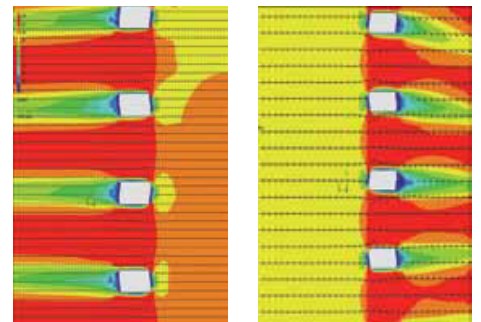
Finish:

RAL 9005 Black stove enamelled polyester powder coated frame (60-80 µm) .

Options:

- Can be adapted for 'Night cooling' natural ventilation
- A range of actuators are available

EFD SIMULATION

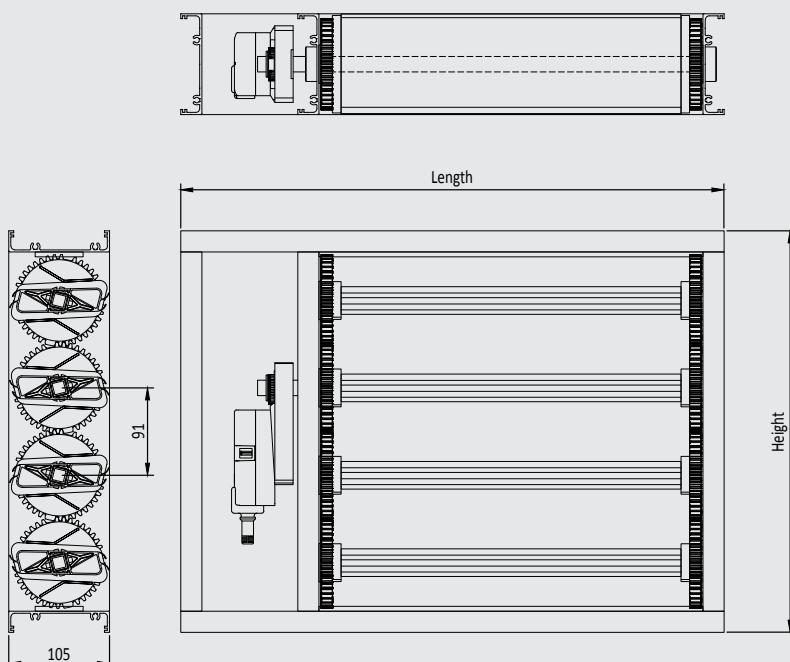


IN

OUT

K-factor	K-factor
Intake: 2.57	Exhaust: 2.57
Ce: 0.62	Cd: 0.62

PNVD



PHYSICAL PROPERTIES

Length:	400 mm – 1500 mm
Blade pitch:	236 mm – 1237 mm
Depth:	105 mm
Blade Pitch:	91 mm
Functional temp	-25°C to +60°C

REMARKS

All dimensions are given in mm.